

► MONROE CLOVER PLAZA

3030 MONROE AVENUE, PITTSFORD, NY 14618

Located at the corner of Monroe Avenue and Clover Street, this Monroe Clover Plaza offers extremely high visibility with over 33,000 cars daily. Just down the road the Pittsford Wegmans and seconds to the I-590 on ramp, co-tenants include Eye Openers, PetSaver, and Mann's Jewelers. Adjacent to the popular Monroe's Restaurant in the historic Spring House.

A 4,940 square foot desirable end cap with excellent visibility is becoming available August 1, 2018. A floor plan follows.



57,770 SF
RETAIL PLAZA



33,152 CARS
DAILY



AVG. HH INCOME
\$137K
WITHIN 1 MILE

DEMOGRAPHICS 2017	1 mile	3 miles	5 miles
Population	3,884	66,670	211,073
Households	1,762	29,545	93,436
Average HH Income	\$137,133	\$105,958	\$81,222
Traffic Count 2015	33,152		



CONTACT COURTNEY JANTO
(585) 287-5850
cjanto@buckprop.com

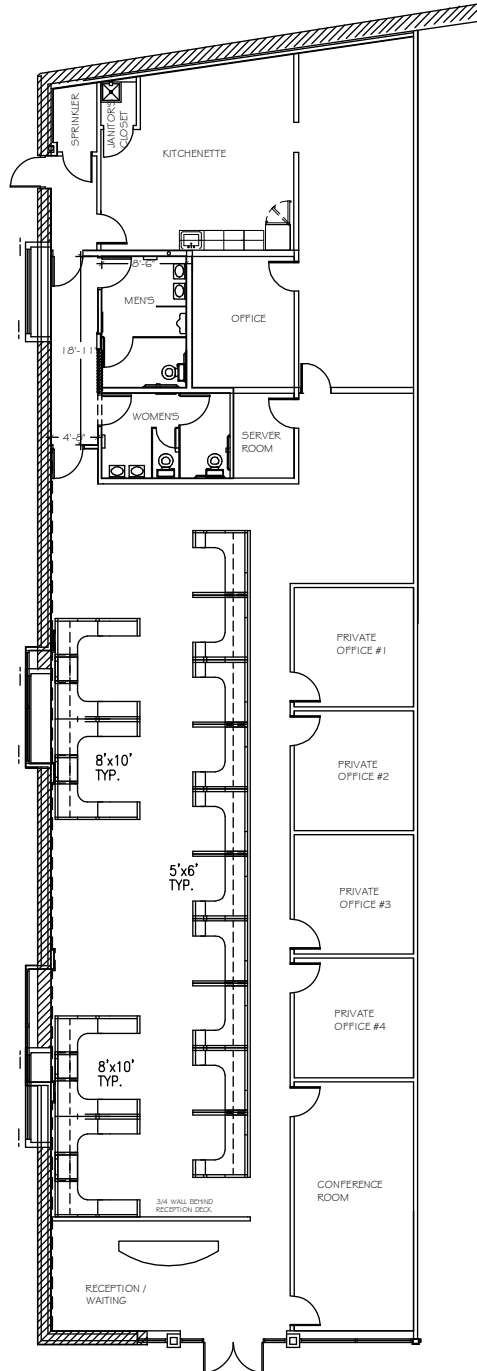


BUCKINGHAM
PROPERTIES

► MONROE CLOVER PLAZA

3030 MONROE AVENUE, PITTSFORD, NY 14618

4,940 SF RETAIL END CAP



CONTACT COURTNEY JANTO

(585) 287-5850

cjanto@buckprop.com



**BUCKINGHAM
PROPERTIES**

Real Estate...*Reimagined.*

T: (585) 295-9500

www.buckprop.com